

Effects of the new agricultural policy on the specialised agricultural region of Mecklenburg-Western Pomerania

**Mecklenburg
Vorpommern**



Landesforschungsanstalt für
Landwirtschaft und Fischerei



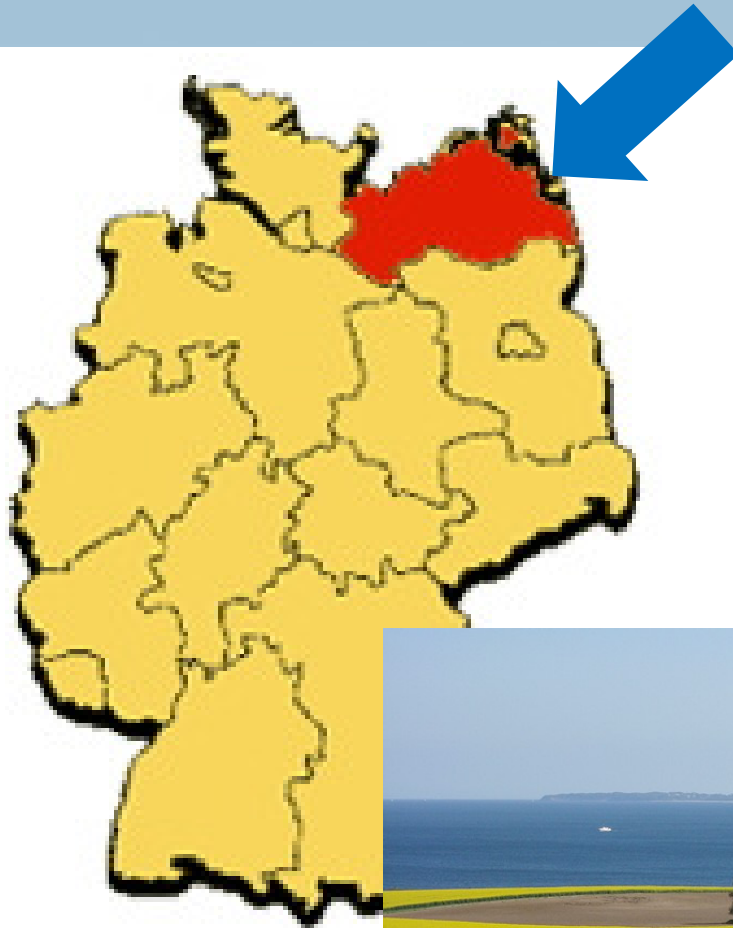
The new EU agricultural policy – continuation or revolution?

Dr. Peter Sanftleben/Dr. Hubert Heilmann

Jachranka/Poland

9-11 December 2013

Mecklenburg-Western Pomerania (MWP) in Germany



**Institute of Arable
Farming and
Economics**

**Institute of Animal
Production**

Institute of Fisheries

**Centre of
Horticultural
Production**



Some aspects of agriculture in Mecklenburg-Western Pomerania

- **1.078.400 hectares**
- **5.000 farms**
- **286 hectares per farm**
- **50,3 % grain, 24,5 % oil seeds, 13,1 % corn**
- **1,3 workers per 100 hectare utilizable agricultural area**
- **farms bigger than 100 hectare: 48 % (Bavaria: 4 %)**



Some aspects of animal production

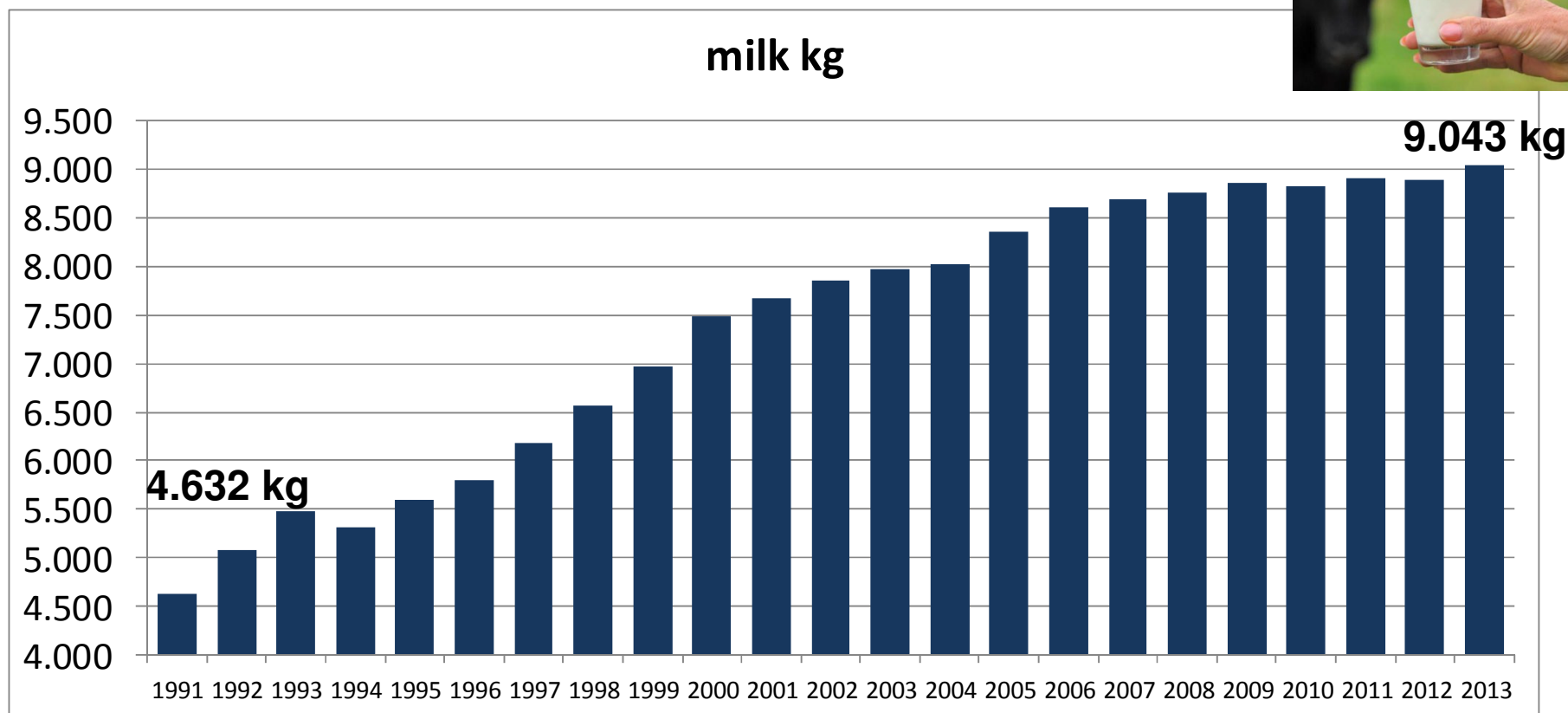
Structure of dairy farming in Mecklenburg-Western Pomerania

- **main factor of agricultural income**
- **177.000 dairy cows (mainly German Holstein)**
- **average herd size = 270 cows**
- **50 % of cows in herds with 200 to 500 cows**
- **25 % of cows in herds with more than 500 cows**
- **tendency of further increasing herds**
- **higher milk yields in bigger herds**



Successful development of dairy farming in MWP

Increase of + 200 kg per cow and year





- **200 members in the breeding association (herd size 300 cows)**
- **effective utilization of natural grassland**
- **bonding of work forces in rural areas**

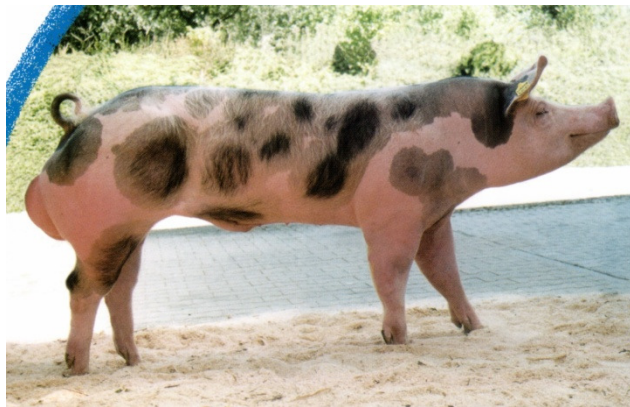


- **mostly important is forage quality**
- **silages from gras, corn, alfalfa and clover**
- **intensive grassland management**
- **corn is of high importance for feeding of cattle as for „feeding“ of biogas fermenters**



Potential of pig production in Mecklenburg-Western Pomerania

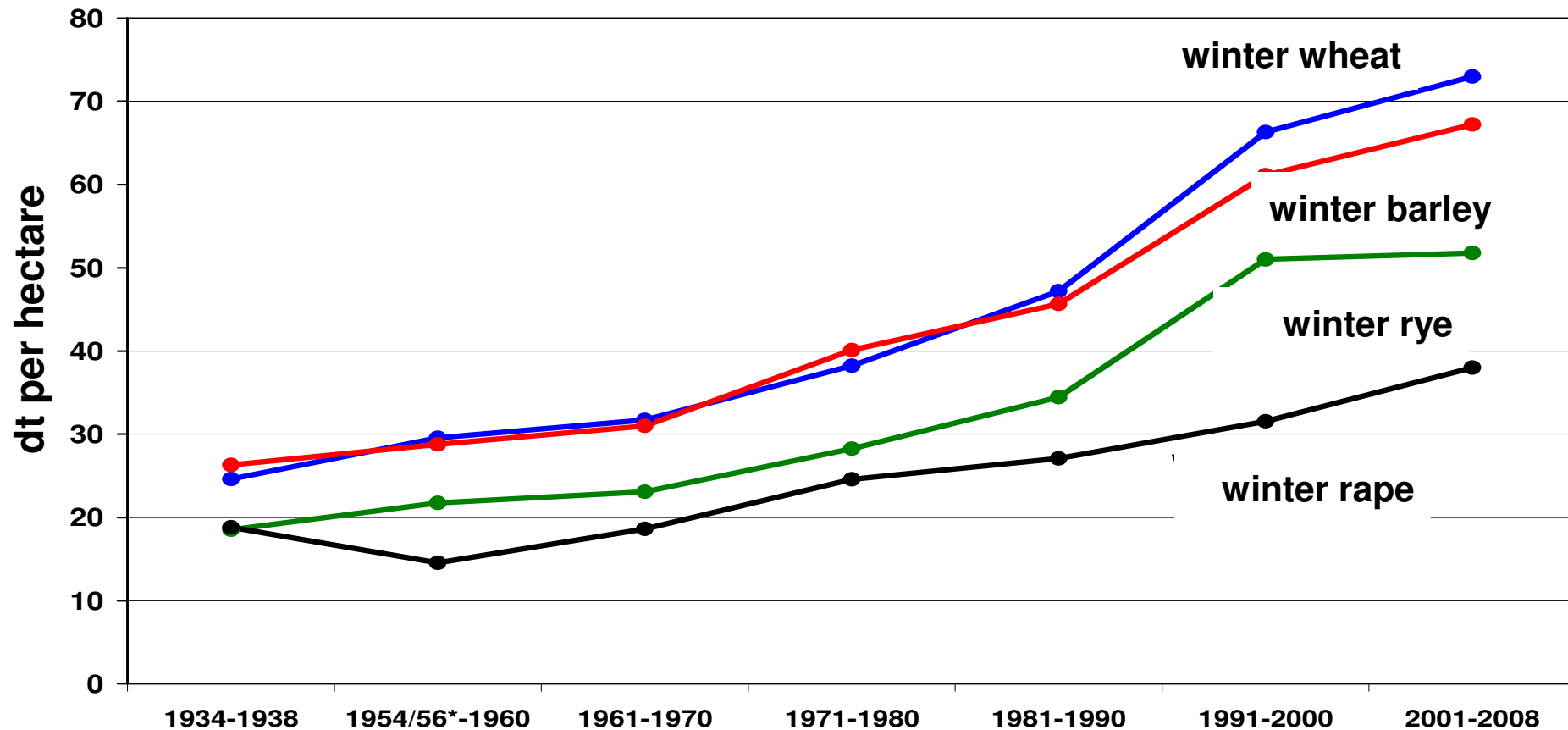
- top position in Germany and Europe (846.000 pigs)
- 23 weaned piglets per sow and year
- each sow is farrowing 2,4 times per year
- intensive breeding work
- selling of 12.000 pigs per year and fattening farm



Some aspects of plant production

Successful development of arable farming in MWP

Increase in yields of grain and rape

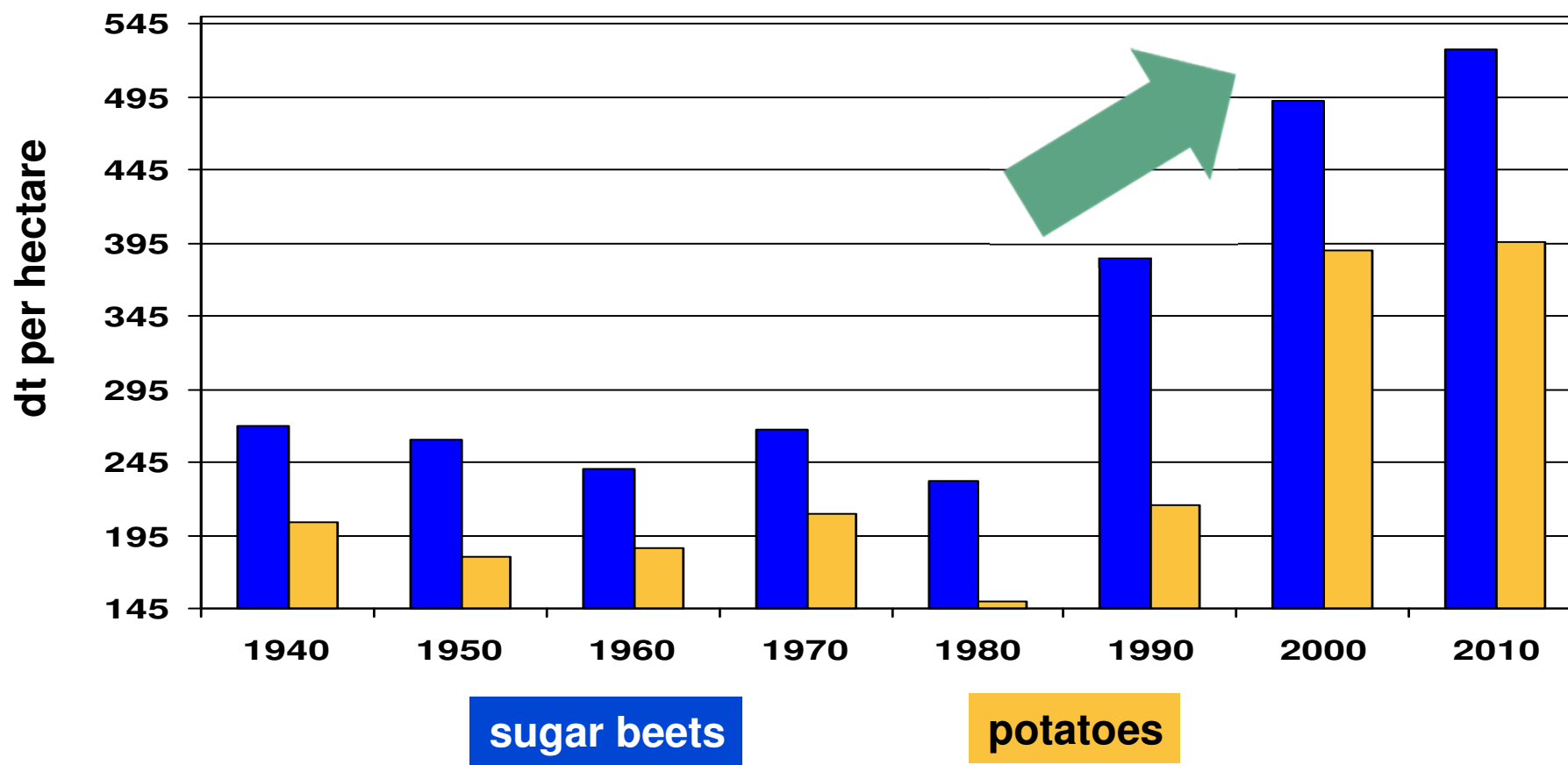


* WW + WG ab 1956, WR + WRa ab 1954

Quelle: Statistisches Amt MV

Successful development of arable farming in MWP

Increase in yields of sugar beets and potatoes



A long way but always the right direction...?



What are the challenges for agriculture?

Economic

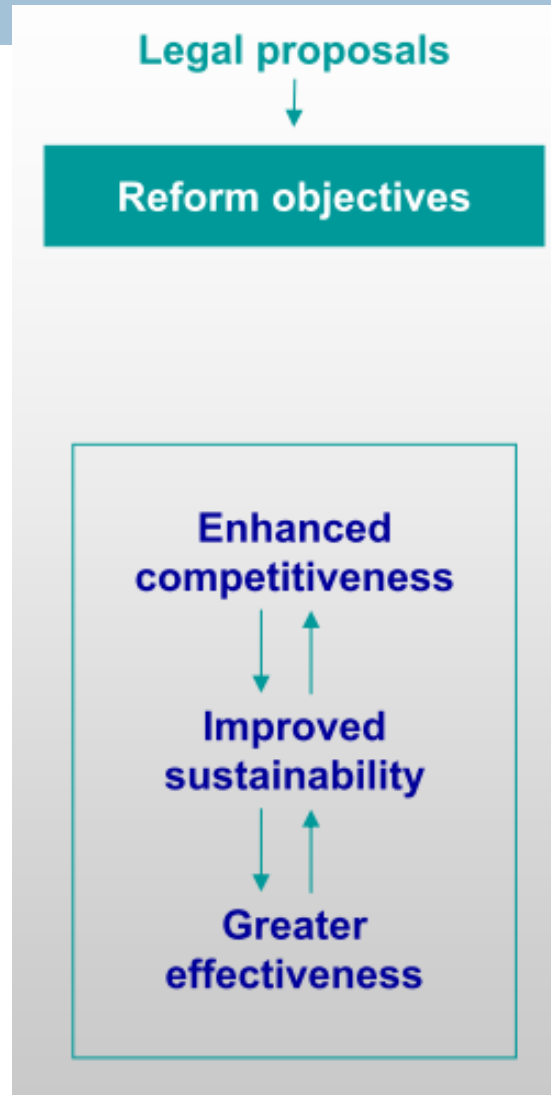
Environmental

Territorial

What are the challenges for agriculture?

- **Economic challenges**
 - Food security
 - Price variability
 - Economic crisis
- **Environmental challenges**
 - GHG emissions
 - Soil depletion
 - Water/air quality
 - Habitats and biodiversity
- **Territorial challenges**
 - Vitality of rural areas
 - Diversity of EU agriculture

What are the challenges for agriculture?



How are decisions assessed by different affected groups?

- **policy: positive and bearable**
- **research: positive is the continued system of decoupled payments**
- **farmers union: loss of 40.000.000 € per year for MWP especially by supporting first hectares (21 mio €) and shifting of direct payments from the first to the second pillar**



Loss of 40.000.000 € per year !!

- **Can an indirect effect of payments from the second pillar be reached?**
- **It seems as it could be reached by intelligent programmes including research and development, consultation, innovation, stimulation of investments.**
- **40.000.000 € mean: In MWP are dealing 20.000 people with agriculture (4 per farm). Each person is losing 2.000 €. This seems to be quite a lot if you recognise that the average payment per agricultural worker is about 25.000 € per year!**



- Germany in 2019: 283,25 € per hectare
- Mecklenburg-Western Pomerania in 2019: 265,13 € per hectare

Looking at farm size:

> 1.000 ha: 255 € per ha

< 50 ha: 295 € per ha

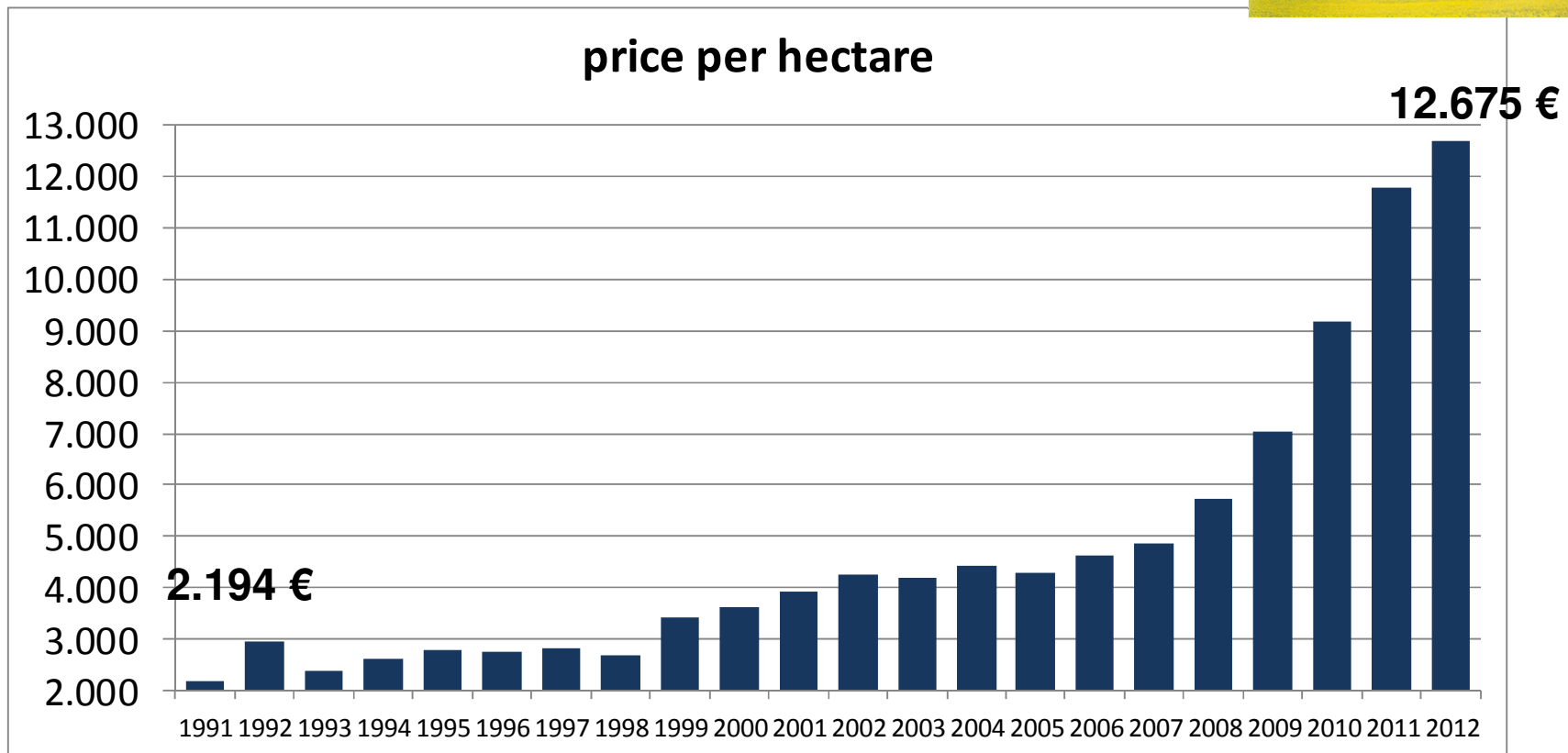


- **necessary but quite difficult**
- **availability of land to ensure an efficient farm size**
- **prices to buy and lease land**

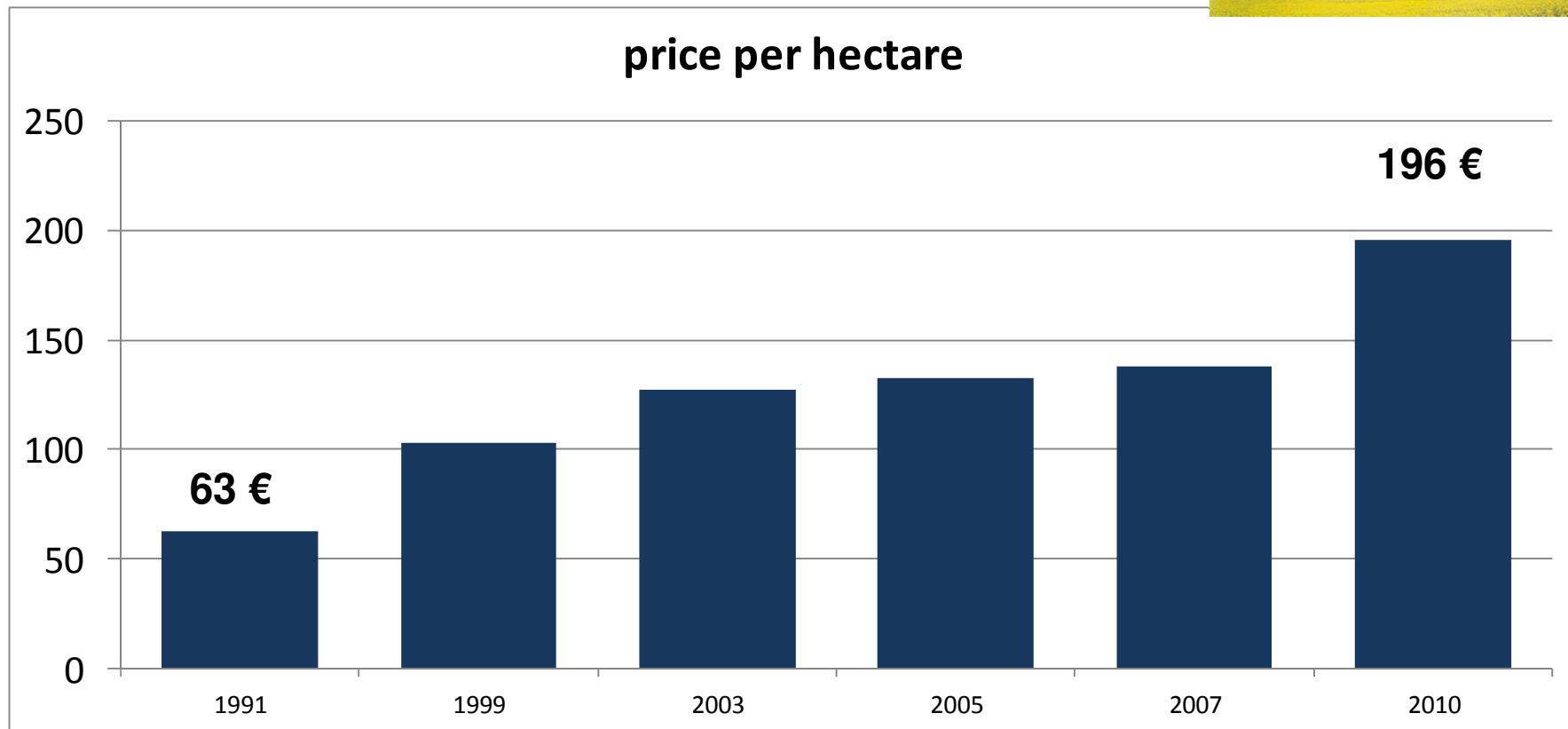


Price to purchase arable land in MWP

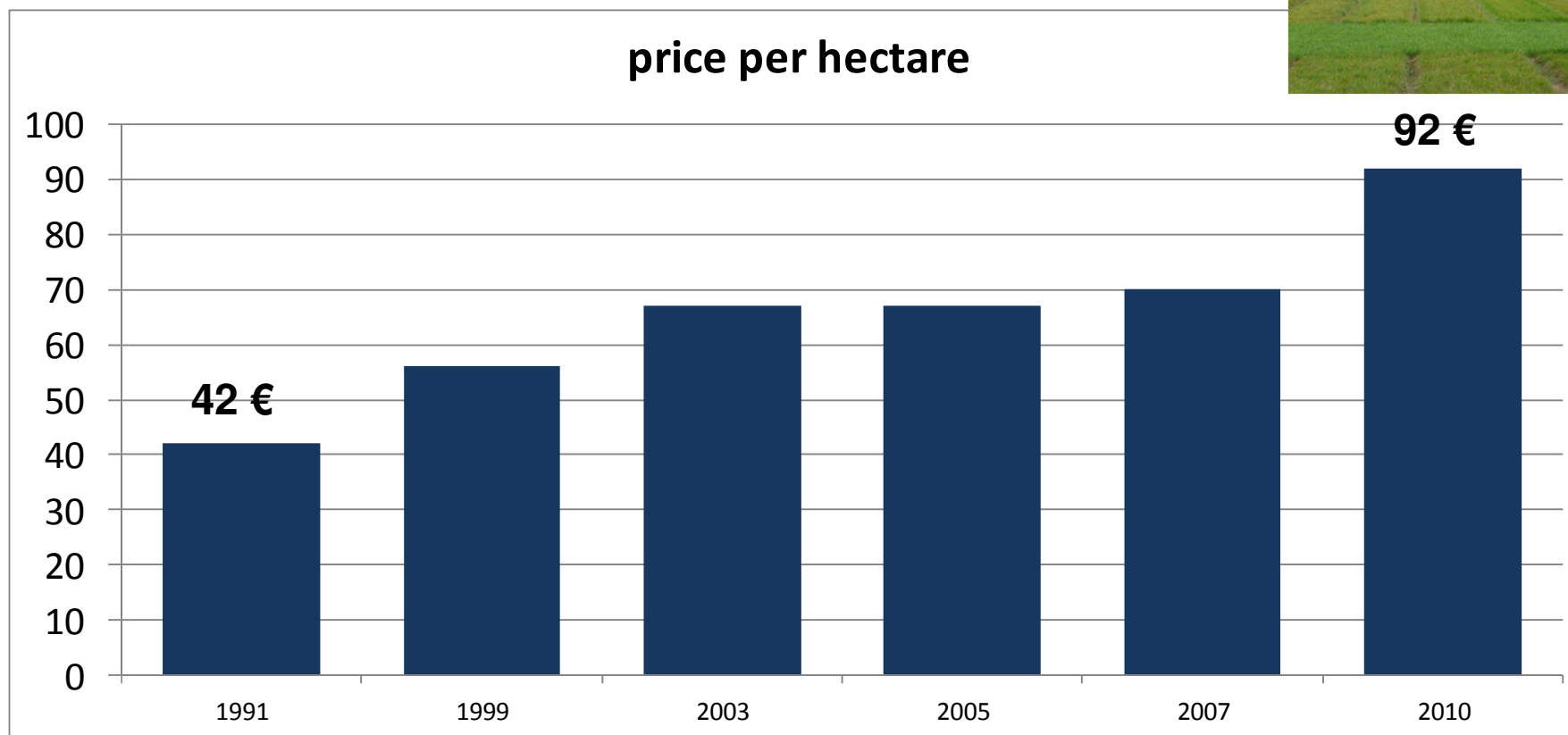
Increase of 500 € per year



Price to lease arable land in MWP



Price to lease natural grassland in MWP



When should discussions about CAP start again?

- **NOW!!!**
- **open debate about future of direct payments after 2019**
- **much more administration for less areas could lead into a dead-end-street**
- **direct payments for land owners and not for farmers**
- **Which payments and supports do farms in future really need to enhance international competitiveness without accelerating structural changes?**





Thank you for your attention!